



IN THE TV ROOM, SONAM GALA REVERSED THE BRIGHT-CEILING-WHITE-WALL TROPE FOR A LIGHT CEILING AND SUMMERY, STRIPED WALLPAPER FROM RALPH LAUREN HOME. IT HELPED OPEN UP THE SMALL SPACE. THE PAINTING ABOVE THE DESK IS BY NAINA KANODIA. THE ONE ON THE RIGHT IS A FRAMED PUZZLE OF AN ANDY WARHOL REPRODUCTION PRINT FROM THE MOMA STORE.

KIRAN GALA AND ASSOCIATES
SONAM GALA, SENIOR DESIGNER

Avid travellers with a penchant for buying art, Sonam Gala and her husband, Nihar Gosalia, wanted to structure their apartment to suit their lifestyles. So Sonam—a senior designer at her father’s interior design firm, Kiran Gala and Associates—turned the standard 1,200-square-foot apartment into one with a walk-in wardrobe, an open living and dining space, and a TV room.

BEFORE A three-bedroom apartment

AFTER A large, open-plan two-bedroom apartment

TIMELINE Nine months

DESIGN MOTTO The rule of thumb is three-is-to-one. Three modern pieces to make the one vintage element stand out; three whites to bring out the one instance of colour. “Two-is-to-one is too quick. For me, three-is-to-one works well.”

ACCESSORIES The apartment is full of curios from the couple’s extensive travels around the world. A vintage vinyl turntable—a favourite of Nihar’s—enjoys pride of place on the AV cabinet. To Sonam, these little accents are more important than any amount of restructuring. “[If you have] three or four items that are really close to you, that you actually love... your house [is] a home.”

USP Sonam’s biggest contribution to the space is bringing in a sense of height—which is no mean feat in a Mumbai apartment. She created what she calls an “indirect” ceiling, with embedded lights that “flood” from the edges. Floor-to-ceiling curtains from Bharat Furnishings add to the illusion.

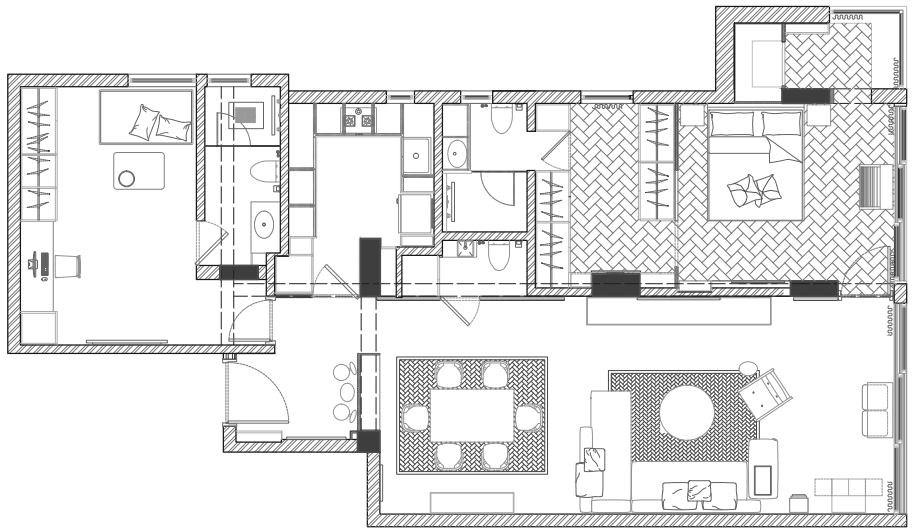
COLOURS They follow no apparent pattern, but all fit together perfectly. A rosewood cabinet from Puducherry is complemented by a red-lacquered dining table and light-oak Carl Hansen chairs. Earthy brown ceiling fans from Anemos effortlessly offset the teal ceiling and vintage furniture.

PHOTOS: SAGAR PADWAL



SONAM KEPT THE ELECTRONICS OUT OF SIGHT. THE SPEAKERS IN THE LIVING ROOM ARE CONCEALED IN THE WALL PANELLING, AND THE MUSIC SYSTEMS ARE STOWED AWAY IN THE CABINET.

“I never liked the formula of less is more. I believe that less is boring. I like to layer a space with colour to make it playful.”
 — Sonam Gala



Top left: The entryway to the master bedroom features antiques, like this styling cabinet from Puducherry’s Geethanjali and a carved stone sculpture of goddess Laxmi sourced from Mumbai’s Chor Bazaar. **Top right:** The mahogany cabinet has a ‘Floating Record’ vertical turntable from Chicago’s Gramovox and a painting by Vivek Kumavat. **Above:** The floor plan of the 1,200-square-foot apartment. **Right:** This vintage bar cabinet is also from Geethanjali. On top of the cabinet is a vase purchased during Maison & Objet in Paris and antique crystal decanters from Chandeliers and Furniture House in Chor Bazaar. The artwork is by Jai Zharotia. **Left:** Sonam broke down a wall separating two bedrooms to create a walk-in wardrobe. The sliding doors and mirrored walls bring a sense of space into the small room. The minimal shelving unit houses a small collection of the couple’s novels and sculptures inspired by Salvador Dalí’s artworks, purchased from Mumbai’s Designer Studio Collectibles.

